

# WINE & DINE

the art of good living

*It's  
time to  
Party!*  
*bring on  
the yuletide cheer*

**ON WITH THE BUBBLES**  
Over 70 champagnes and  
sparkling wines blind tasted

**DINING LARGE**  
The best culinary fetes of 2009

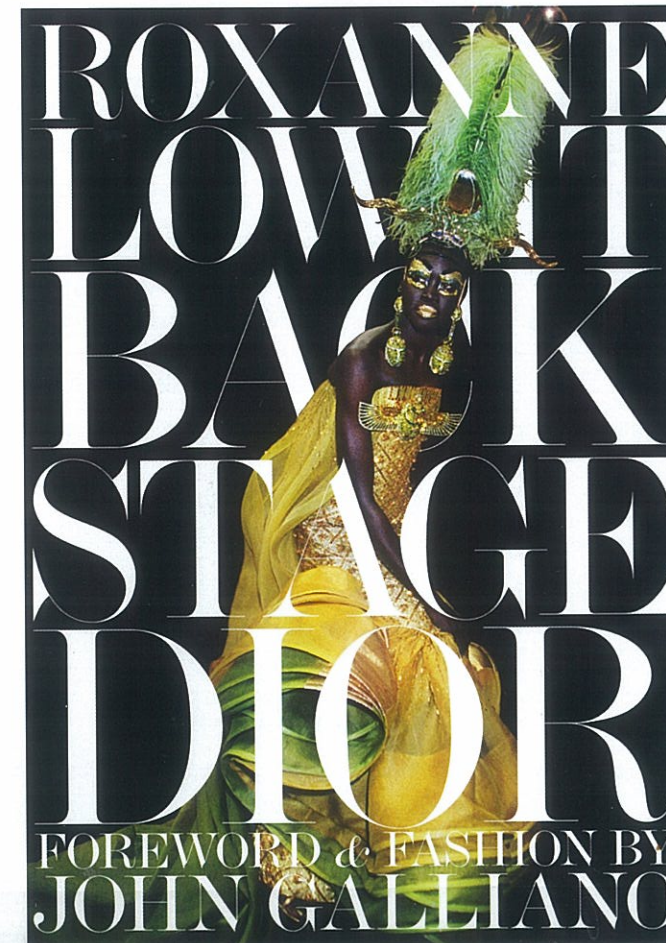


DECEMBER 2009  
6707851015988  
5\$7.50 RM17.00 HK\$60.00

showcase

## SHOWCASE

CAPTIVATING GIFT IDEAS FOR THE FESTIVE SEASON



### ◀ GET BEHIND THE SCENES

In **Backstage Dior** (teNeues Publishing Company; 2009), veteran New York photographer Roxanne Lowit chronicles Dior's design supremo John Galliano's fashion shows for over a decade. With a rough-hewn, up-close approach she delves into the fascinating details behind the scenes. Her collection of snapshot-style photographs convey the buzz of fashion's consistently most inspiring spectacle. A bold mixture of colour and black-and-white, these images are by turns whimsical and awe-inspiring. As much a star as the celebrities she profiles, Lowit brings an insider perspective to this world of high glamour.

Available at leading bookstores.

### FAIRY WRITE

**Caran d'Ache**, Maison de Haute Ecriture, reinvents winter every year by creating an exceptional model of the Ecridor Eclat collection. This year, for a limited period (October 2009 to March 2010), Caran d'Ache craftsmen in Geneva have produced a winter edition exclusively dedicated to women called CRYSTALLIZED™ - Swarovski® Elements. The poetry of Ecridor Eclat "Création de l'Hiver" ("Creation of Winter"), a fairy representing the eternal beauty of winter, is delicately engraved on the writing instrument's hexagonal body and accompanied by a twinkling trail of 58 CRYSTALLIZED™ - Swarovski® Elements precisely set to enhance the sparkle of the platinum with their enchanting reflections.

Caran d'Ache  
#01-36G, Raffles City Shopping Centre.  
Tel: 6337 2428.

### ◀ HIGH STAKES

The SP-1 Roulette by avant-garde luxury watch manufacturer, **Azimuth**, was specially conceptualised to coincide with the opening of Singapore's upcoming Integrated Resorts in 2010. Already, the watch has won the hearts of the editors of *iW*, *International Watch Magazine*, the largest and most respected US watch magazine, which voted the SP-1 Roulette as their favourite watch in BaselWorld 2009. Just 500 pieces will be released this year through 2010 and it will undoubtedly be the ultimate fashion accessory to don when raising the stakes at the tables.

Azimuth  
333 Orchard Road, #02-20, Mandarin Gallery.

